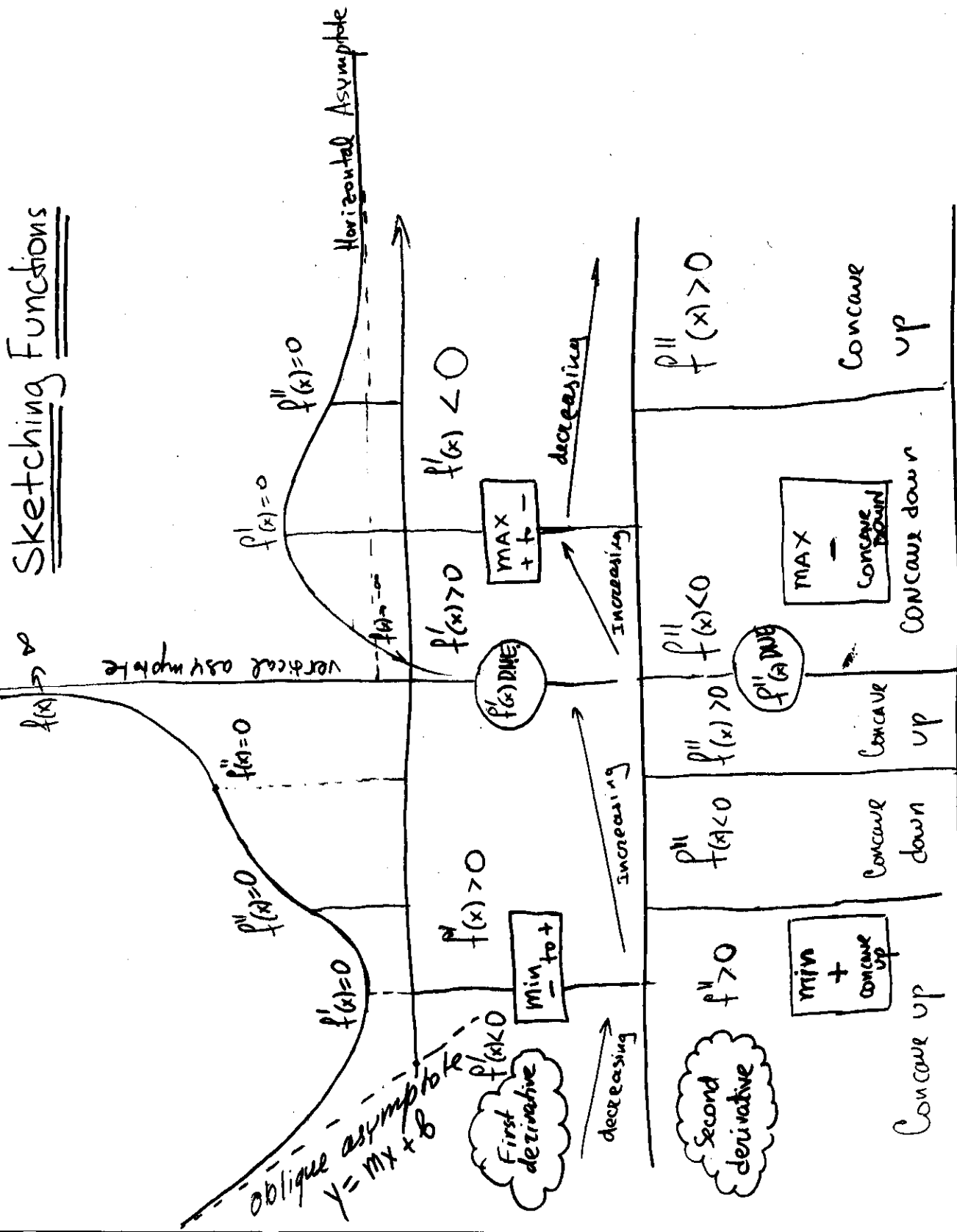


Sketching Functions



Vert: $x=c$
if $f \rightarrow \pm\infty$
if $x \rightarrow c^\pm$

Horizontal: $y=L$
If $L = \lim_{x \rightarrow \pm\infty} f(x)$ exists

Oblique: $y = mx + b$
If $m = \lim_{x \rightarrow \pm\infty} \frac{f(x)}{x}$ or $m = \lim_{x \rightarrow \pm\infty} f'(x)$ exist

and $b = \lim_{x \rightarrow \pm\infty} [f(x) - mx]$ exists

Asymptotes