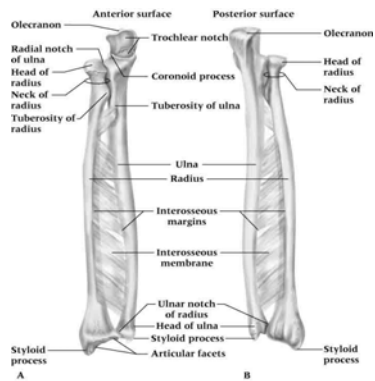


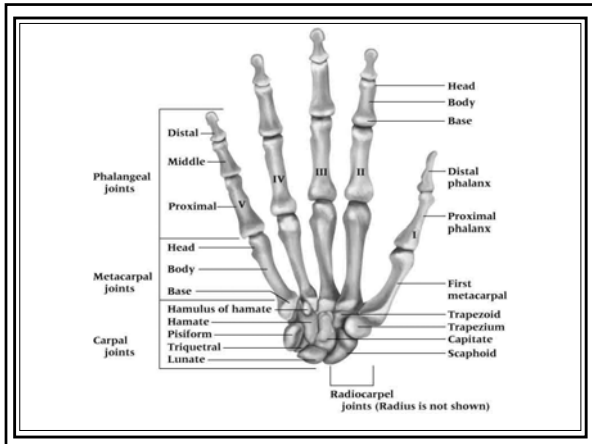
**Anatomy,
Mechanics
&
Mechanisms
Of
Injury**

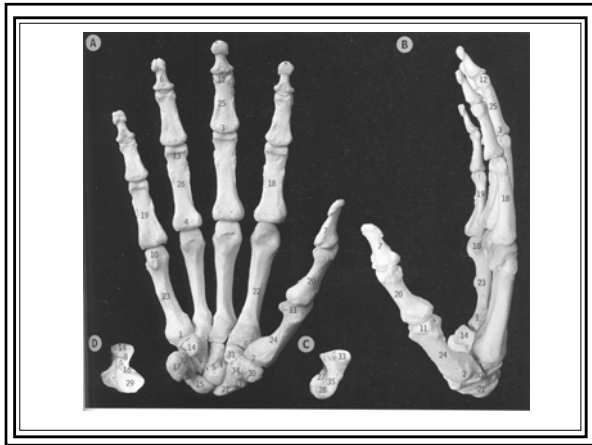


Interactive Hand 2000 © 2001 Primal Pictures Ltd

BONES



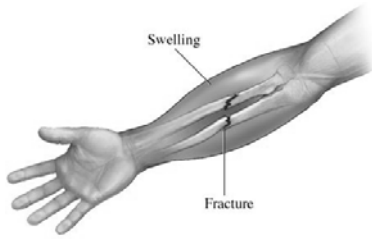




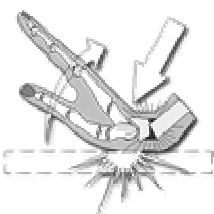
Carpals
Scared
Lovers
Try
Positions
That
They
Cannot
Handle

*Trapezium is by the thumb
 Trapezoid is in zoid.*

Fractures of the Radius and Ulna



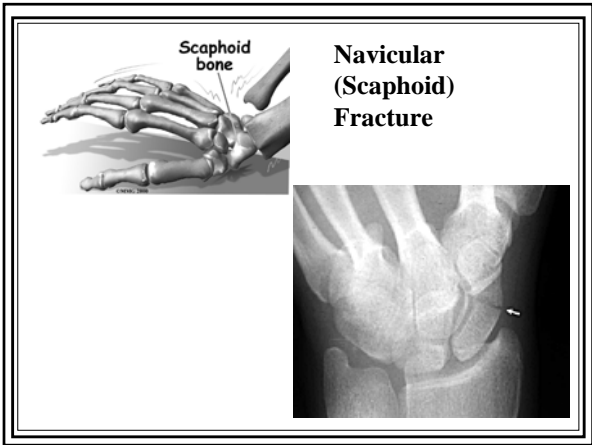


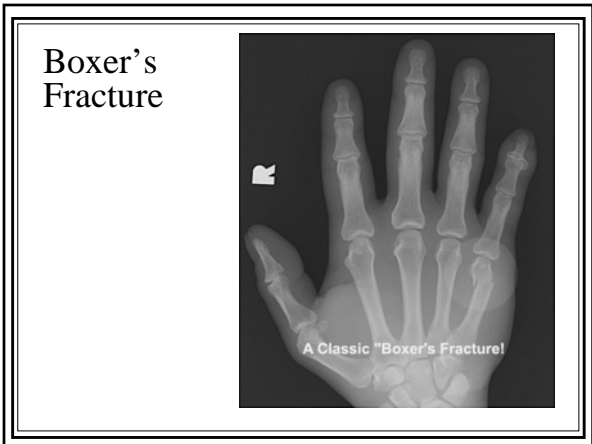


**Colles'
Fracture**

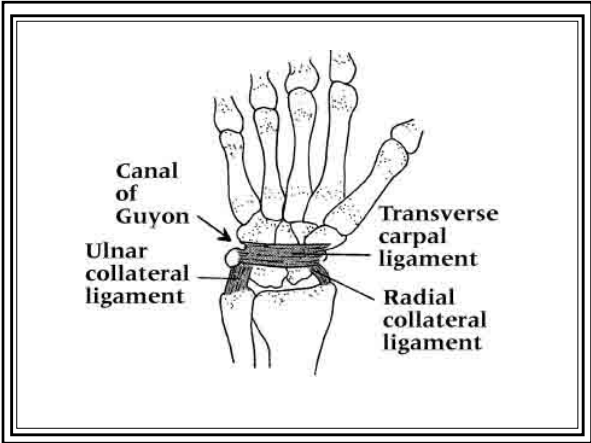




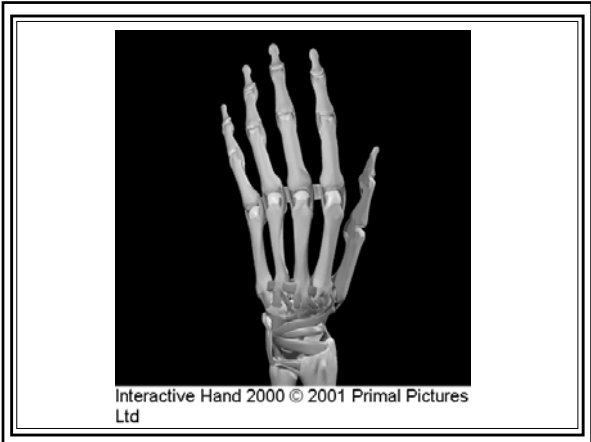


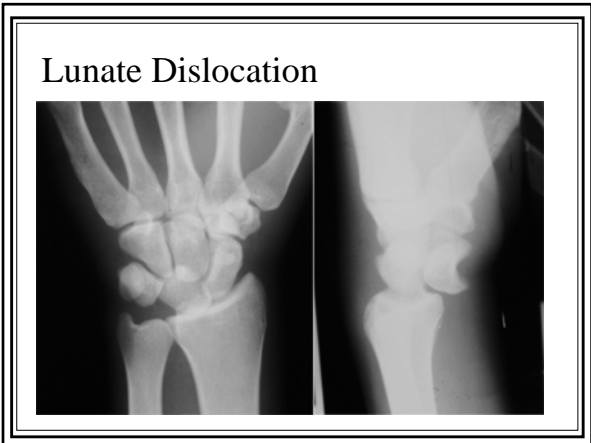


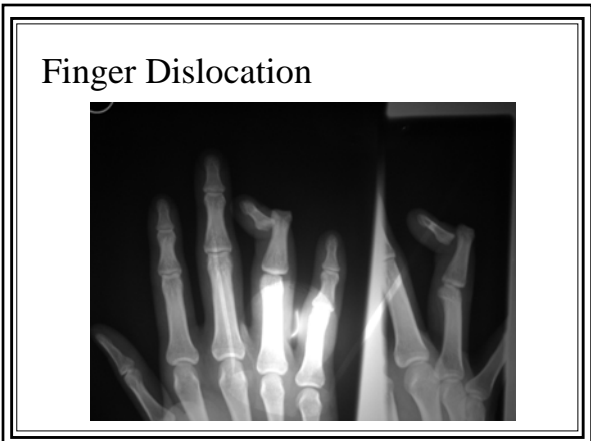
Joints











Gamekeeper's (Skier's) Thumb



Figure 9: Joan Kozel, University of Wisconsin Hospitals and Clinics

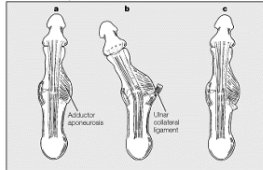
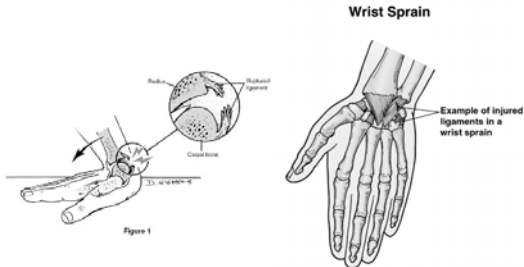


Figure 9. In the thumb metacarpophalangeal joint, the adductor aponeurosis covers the ulnar collateral ligament (a). When thumb angulation is sufficient, the ligament can rupture and be displaced (b). If the ligament becomes trapped outside the aponeurosis (c), a Stener lesion results. A trapped ligament that is not surgically repaired leads to chronic instability.

Sprains



Wrist Sprain

Copyright © 2005 McGraw-Hill Health Solutions LLC. All rights reserved.

Muscle / Tendon

Muscles / Tendons

- Extrinsic – proximal attachment not on hand
- Intrinsic – both attachments on hand

Extrinsic Thumb

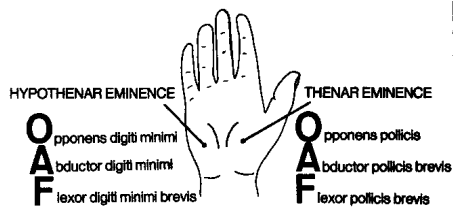
- Abductor Pollicis Longus
- Extensor Pollicis Brevis
- Extensor Pollicis Longus
- Flexor Pollicis Longus

Thenar Eminence

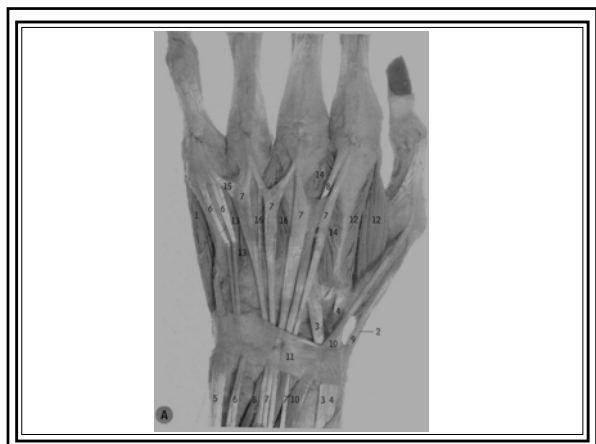
- Opponens Pollicis
- Adductor Pollicis
- Flexor Pollicis Brevis
- Adductor Pollicis

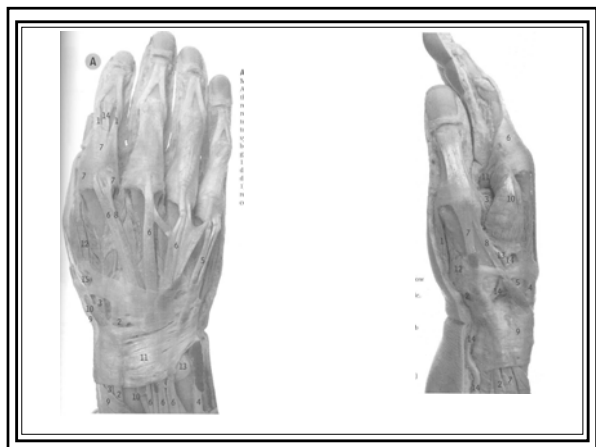
Hypothenar Eminence

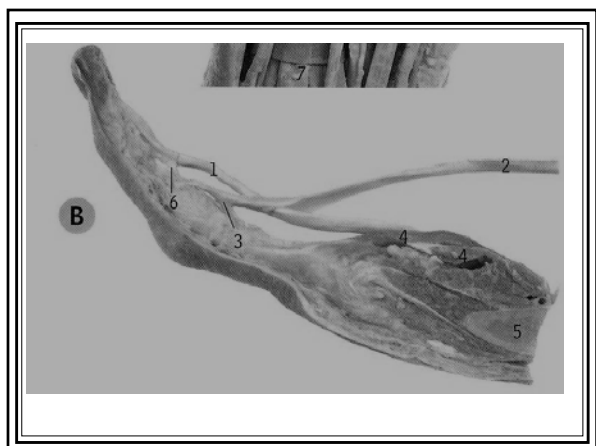
- Opponens Digiti Minimi
- Adductor Digiti Minimi
- Flexor Digiti Minimi
- Palmaris Brevis

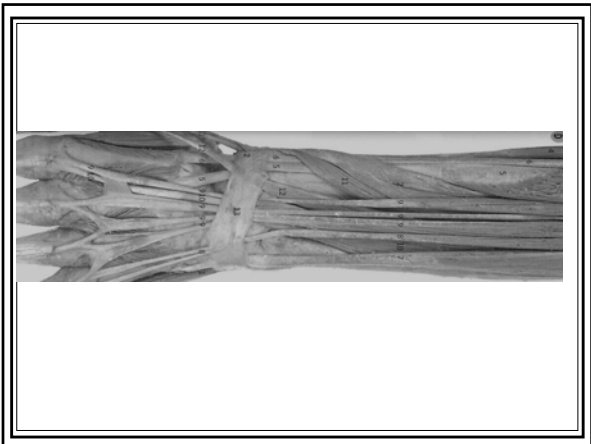


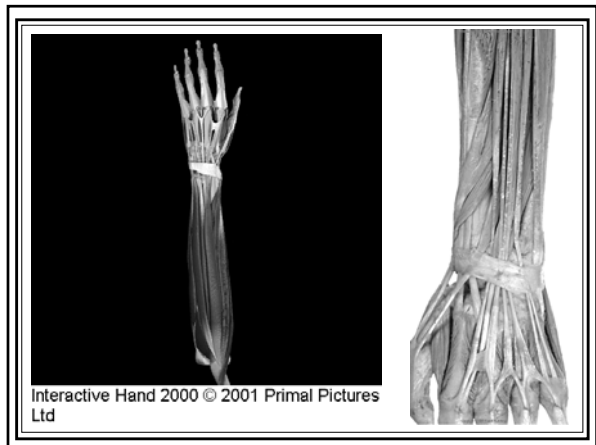


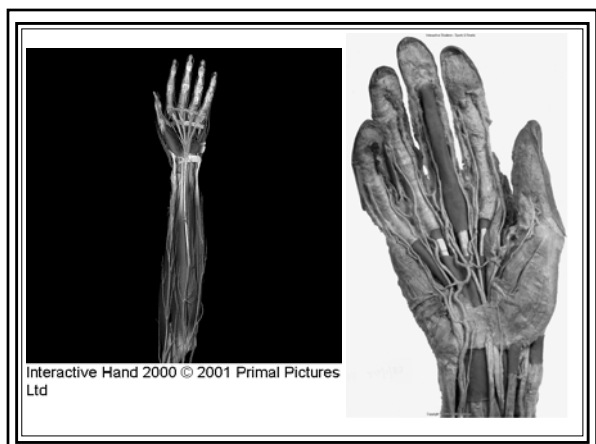






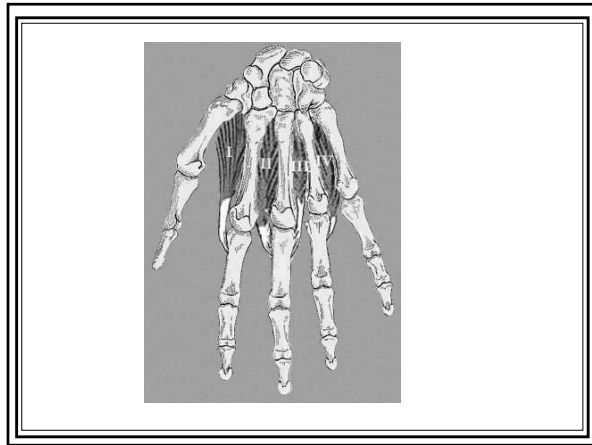


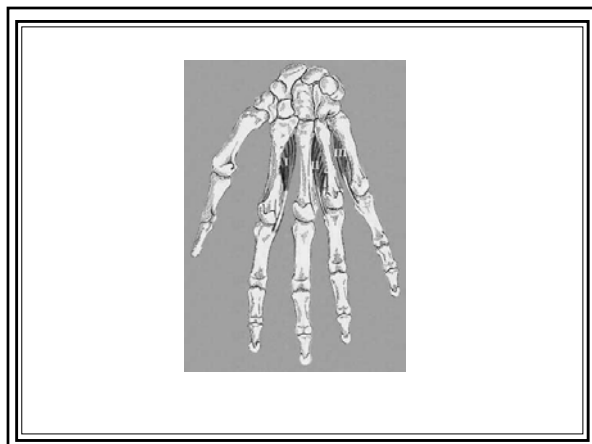


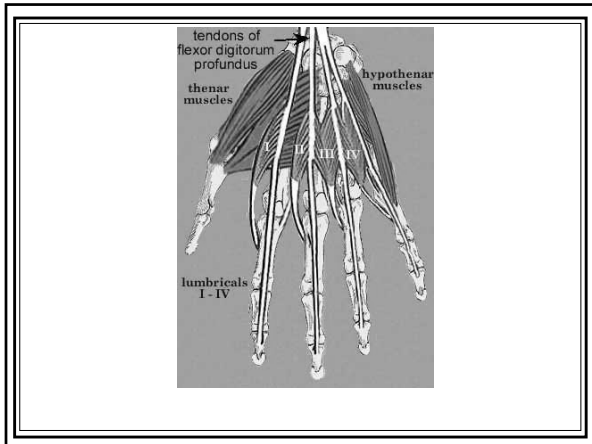


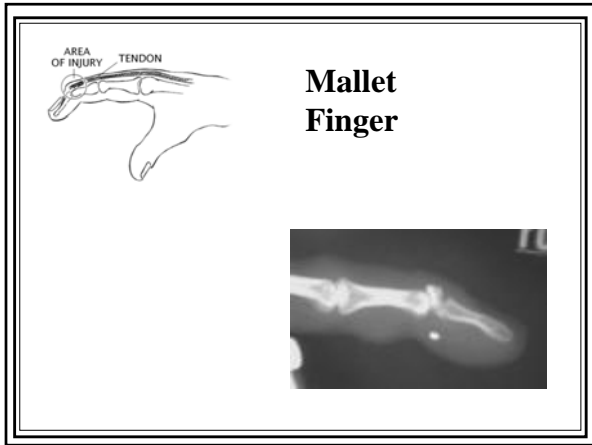
Central Compartment

- Lumbricals
- Dorsal Interossei (4) *Pads and Dabs
4 Dor*
- Palmar Interossei (3)









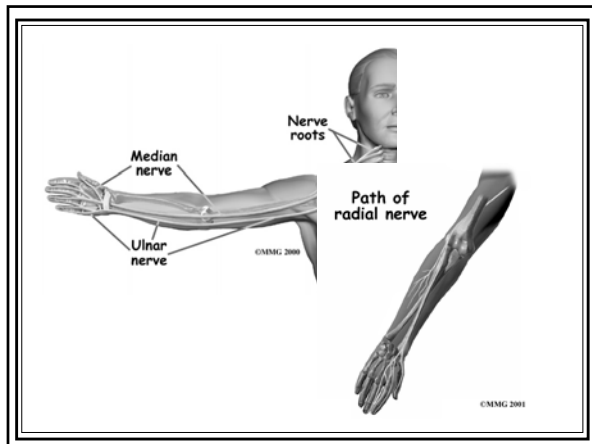
Jersey Finger

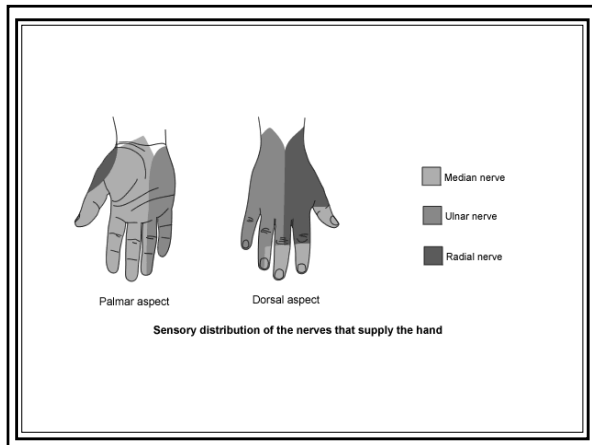
- Opposite of mallet finger

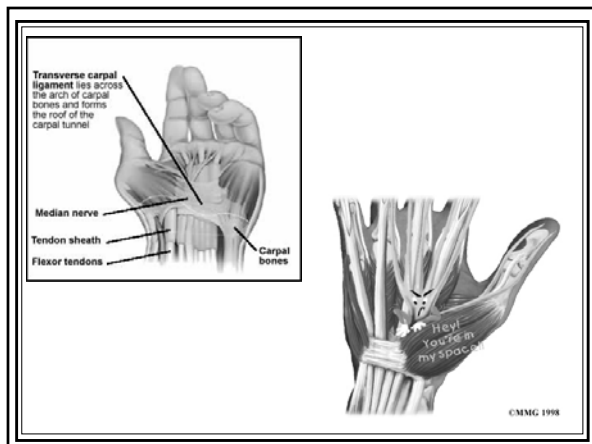
Boutonniere Deformity

de Quervain's (Hoffman's) Disease

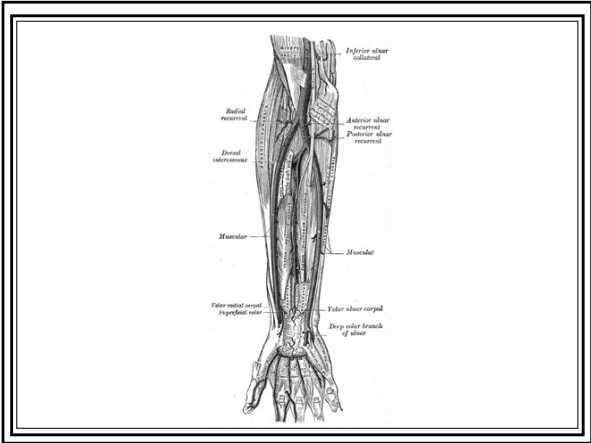
Nerve







Vascular



Surface Anatomy

