

Upgrade Your Business for FREE!

Small Business Direct Install (SBDI) Program

The SBDI program is available to LADWP non-residential electric customers in good standing, in Rate class A-1, whose average monthly electrical use is 30 kW or less. If you qualify, a trained Energy Service Representative will identify potential energy and water savings. If you agree with the recommendations, the ESR will schedule an appointment to install the equipment at no cost! ladwp.com/sbdi

Is Your Business as efficient as it could be?

Energy and water saving measures that may be performed include: energy efficient lighting system and lamps, LED exit signs, low-flow toilets, pre-rinse spray valves, pipe and water heater insulation, low-flow shower heads, and faucet aerators.



To apply, or if you have questions, contact a SBDI Program representative by email: sbdi@ladwp.com or call 1-877-714-1254

Customers who lease their business are eligible for program participation, but landlord permission is required.

FREE Water Conservation Items

LADWP is proud to offer commercial customers faucet aerators and low-flow shower heads for FREE!

Visit your nearest Customer Service Center to pick them up.



Go to <http://bit.do/waterconservation> for information about how much water these items could help your business save!

Solar Incentive Program

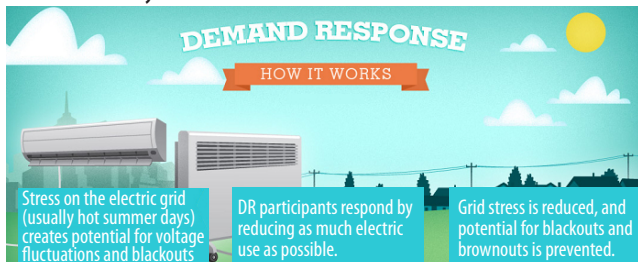
The Solar Incentive Program (SIP) offers incentives to offset the cost of installing a solar rooftop system on your business. This rebate is a one-time payment to customers who purchase or lease solar rooftop systems while still being connected to the city's power grid. ladwp.com/sip



SIP incentive levels are structured as a 10-step declining incentive, based on the amount of solar photovoltaic installed and connected to LADWP's electric grid. To find out the current solar incentive level, go to <http://bit.do/sipupdate>

Demand Response Program

Promise to cut your electricity usage on the hottest days of the year to relieve stress on the grid and get large incentives for cutting back. The curtailment season is between June 15 and October 15. DR events generally begin between 1:00 p.m. and 5:00 p.m. and do not exceed four hours each. You can choose to receive alerts from LADWP one day or two hours in advance of shutdowns.



This program is available to large electricity users only (need to be able to cut 100 kW or more). <http://bit.do/demandresponse>

LADWP Commercial Rebates

Custom Performance Program (CPP)

This program offers a one-time payment for investments in eligible projects that reduce the electrical energy use in your building or facility. Most CPP incentive payments are based on the annual kWh savings as calculated or accepted by LADWP. Primarily designed for large commercial and industrial customers, this program helps reduce energy costs while improving the project's payback period and return on investment. ladwp.com/cpp

Example incentives may include the following, but businesses can also tailor the incentives to meet their specific needs:

CPP Incentive Categories	Incentive Levels
Controls/RCx	\$0.15/kWh
Plug/Process/Other	\$0.15/kWh
HVAC-Refrigeration (Includes chillers & VRF)	\$0.25/kWh
Envelope (Includes windows, cool roof)	\$0.25/kWh
Lighting (Including LED fixtures)	\$0.15/kWh
Lighting Controls	\$0.10/kWh
Lighting (Lamp Only)	\$0.05/kWh
Thermal Energy Storage	Up to \$750/kWh

Cap = 75% of project cost



Custom Express Program

Receive per unit rebates for specific measures to efficiently control energy use of plug loads. ladwp.com/express

Measure Category	Incentive Rate
Plug Load Occupancy Sensors	\$15 per sensor
Network PC Power Management Software	\$10 per computer
High Efficiency Copier	\$100 per unit

Food Service Program

Reduce your electricity bills and the cost of new refrigeration equipment when you replace or retrofit existing equipment with energy-efficient refrigeration technologies. Rebate measures include ice machines, solid and glass door refrigerators/freezers, door gaskets, night covers, strip curtains, vending machine controllers, auto-closers for freezer doors, and other energy efficient measures. Visit ladwp.com/foodservice to see a complete list of eligible products, rebate amounts and to apply.

Use Trees to Save Energy

FREE Trees from City Plants

City of Los Angeles businesses can get 7 free shade trees delivered to their doors (and may be eligible to receive even larger quantities).

If you agree to water parkway trees in front of your business, City Plants will even do the planting work for you at no charge!

Shading your building can greatly reduce your energy demands!



Apply online at www.cityplants.org or call (213) 473-9950

SoCal Water Smart Rebates

Southern California businesses are eligible for generous rebates to help encourage water efficiency and conservation.

Cash rebates are available for water saving technologies, including:



Rebate type	Incentive Amount
-------------	------------------

Plumbing Fixtures

Premium high-efficiency toilets	\$200/unit
Zero and ultra-low water urinals	\$500/unit
Plumbing flow control valves	\$5/Valve (min. 20)

Landscape Equipment

Irrigation controllers	\$50/station
Rotating sprinkler nozzles	\$6/nozzle (min. 30)
Large rotary nozzle retrofit	\$13/set (min. 8)
In-stem flow regulators	\$2/device (min. 25)
Soil moisture sensor systems	\$35/station

Food Equipment

Connectionless food steamer	\$600/compartments
Air-cooled ice machine	\$1000/device

HVAC Equipment

Cooling tower conductivity controller	\$625/device
Cooling tower pH/conductivity controller	\$3000/device

Medical and Dental Equipment

Dry vacuum pump	\$125/0.5 HP (max 2 HP)
Laminar flow restrictors	\$10/restrictor (min. 10)

You must get a rebate reservation before purchasing equipment. Rebate amounts listed are for LADWP customers. Amounts may vary by water agency and are based on availability of funding. Visit socialwatersmart.com/commercial to apply for a rebate reservation online and estimate your rebate amount.

Turf Removal Program



Replace turf grass with CA Friendly® plants, mulch, and permeable pathways. Must get pre-approval of application before starting project.
http://bit.do/commercial_lawn

Funding has been exhausted in many areas, however, DWP is still offering turf removal rebates at \$1 per square foot for businesses.



CSUN

INSTITUTE FOR SUSTAINABILITY

18111 Nordhoff Street
 Santa Susana Hall, Room 116
 Northridge, CA 91330-8444

www.csun.edu/sustainability
sustainability@csun.edu
 (818) 677-7710

For a list of all links mentioned in this brochure, please visit:
www.csun.edu/sustainability/resources/energy-water



Sponsored by the LADWP Community Partnership Grant



1-800-DIAL DWP
www.ladwp.com/save



GO GREEN & SAVE GREEN

COMMERCIAL RESOURCE GUIDE

CSUN

INSTITUTE FOR SUSTAINABILITY

